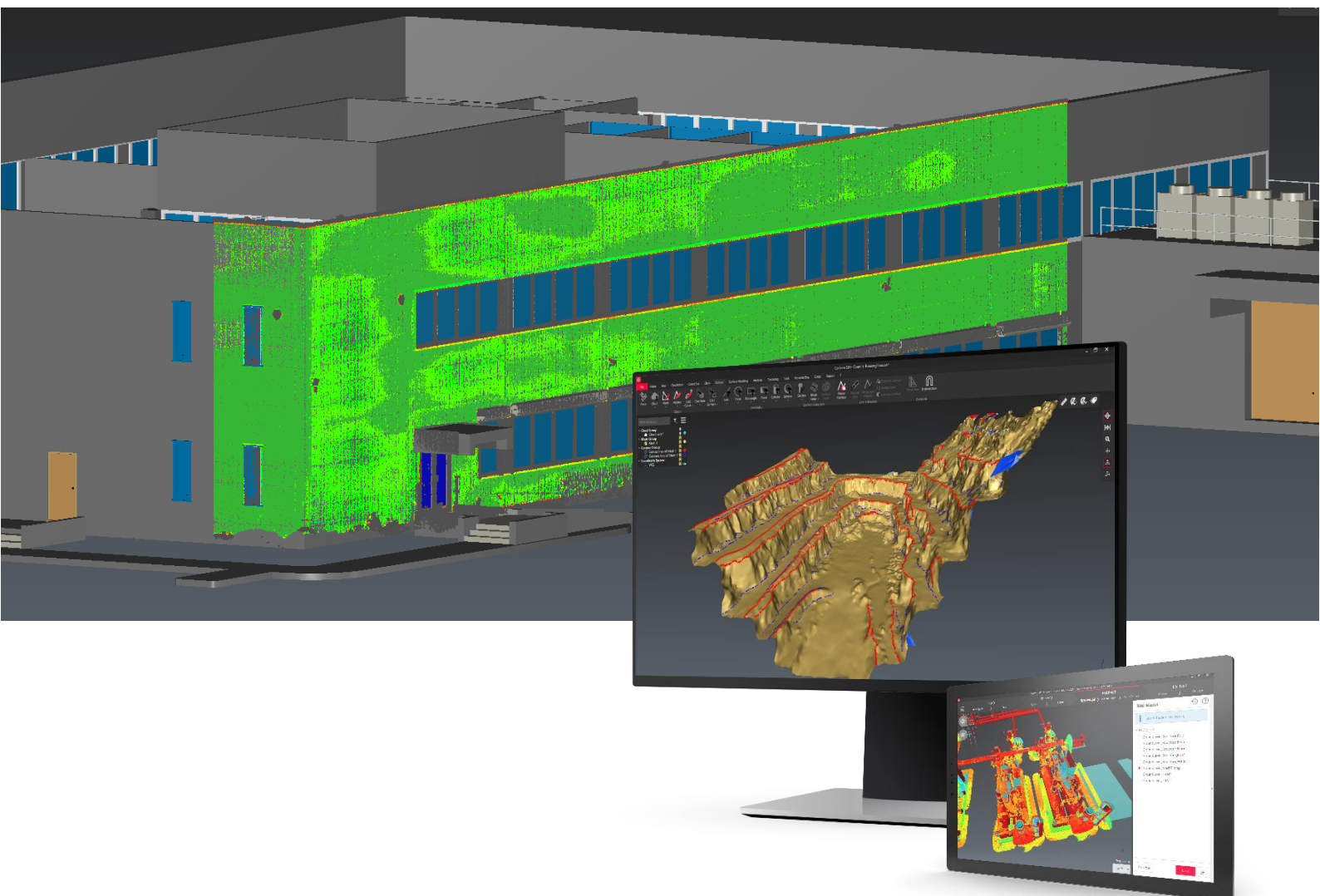


- when it has to be right



Leica Geosystems Release Notes

Product: Leica Cyclone 3DR 2021.1.5
Date: 01 September 2021
From: HDS Software Product Management



Contents

What's New	3
Bug Fixes.....	3
Generic specifications	3
Leica Cyclone 3DR 2021.1 Compatibility	3
Recommended Computer Specifications	4
Installation and Licensing Recommendations.....	4
Installation update Procedure	4
Licensing Setup.....	5
Licensing	9
Known Issues	9
Leica Cyclone 3DR supported file formats	9

What's New

This is a minor release including bug fixes for stability.

According to the maintenance expiration date policy, users under maintenance on March 12th, 2021 may access version 2021.1 with no new license required.

Bug Fixes

- **Analysis** Fixed inaccurate results with wrong points that were projected on mesh vertices (free edges of meshes). Two commands are fixed:
 - **Compare Inspect Cloud vs. Mesh**
 - **Clash**
- **Analysis > Edit Colors:** Fixed a crashed that could occur when too many presets were saved.
- **Analysis > Edit Colors:** Repaired "List of values" preset.
- **Analysis > Edit Colors:** Clockwise and counter-clockwise displays were inverted inside the command.
- **Extract > Plane > Region Grow:** Fixed a crash that could happen during extraction.
- **Extract > Sections > Planar Sections:** Fixed a bug that prevented the command from extracting the table of cloud slices when creating sections on a point cloud.
- **File > Save with IFC model:** Fixed an application-freeze situation that could happen when saving a 3DR project including an IFC model with many entities.

Generic specifications

Leica Cyclone 3DR 2021.1 Compatibility

- Cyclone 3DR is compatible with CLM 1.8 and higher.
- Cyclone 3DR is compatible with JetStream ENTERPRISE 1.3 and higher.
- Cyclone 3DR is compatible with LGS files.
- Cyclone 3DR is compatible with Cyclone IMP databases from Cyclone 6.0 or higher, however improved rendering will only be seen with IMPs from Cyclone 9.3 or higher.
- Cyclone 3DR 2021.1 or higher supports direct opening of Cyclone REGISTER 360 2021 or higher projects.
- Cyclone 3DR 2021.1 or higher is compatible with Cyclone ENTERPRISE 2021 and higher.

Recommended Computer Specifications

Regular workflows:

- CPU: 2 GHz Dual Quad Core i7 or higher (i5 minimum)
- RAM: minimum 16 GB or more for 64-bit OS
- Graphic Card: NVidia Quadro or GeForce 1 GB (with OpenGL support, versions 4.3 or higher)
- Operating system: Microsoft Windows 7, 8, 10 (64 bits supported)
- Hard Disk: 3 GB free disk space

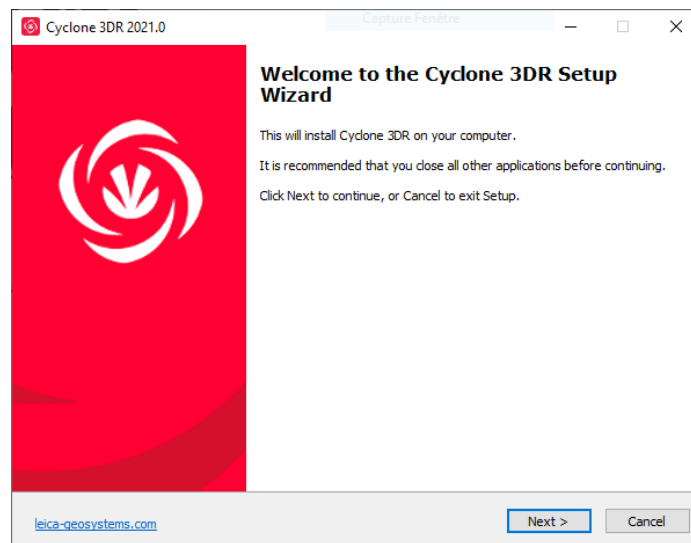
Tablet device for Touch Mode:

- Microsoft Surface PRO Core i7 1.5 GHz – 16GB RAM.

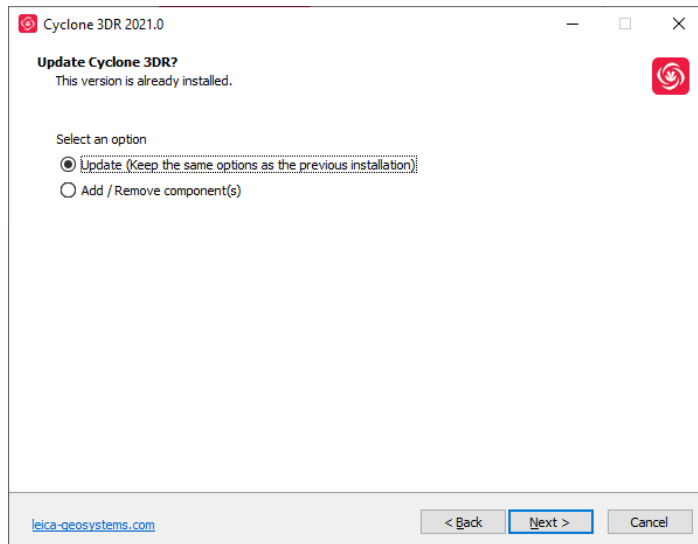
Installation and Licensing Recommendations

Installation update Procedure

1. Follow the directions in the Setup Wizard



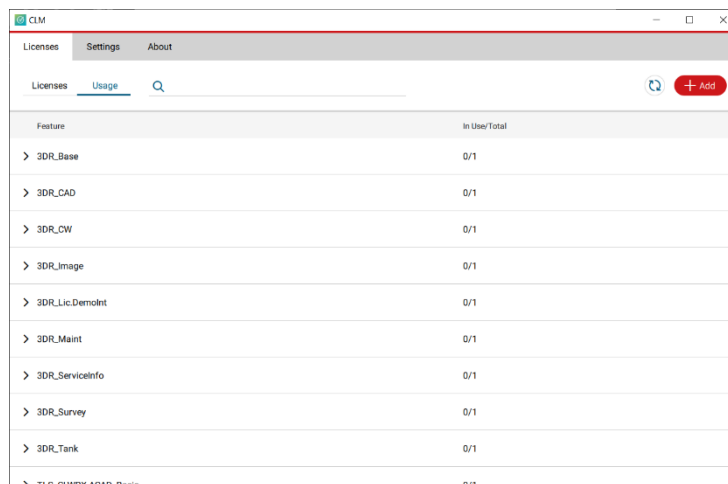
2. Select the option to update Cyclone 3DR (or repair if you want to change installing options)



3. Complete the installation by selecting "Finish".

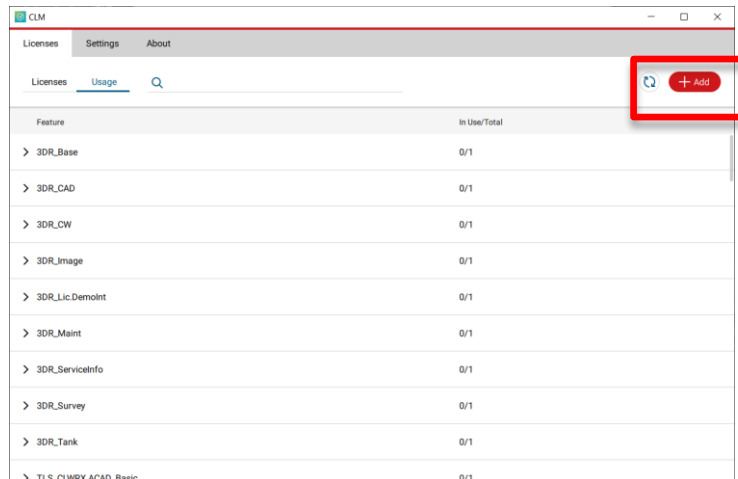
Licensing Setup

1. Once you have installed Cyclone 3DR, open the Client License Manager for **Floating Licenses**. The program is located here: **Start Menu | All Programs | Leica Geosystems | Client License Manager**

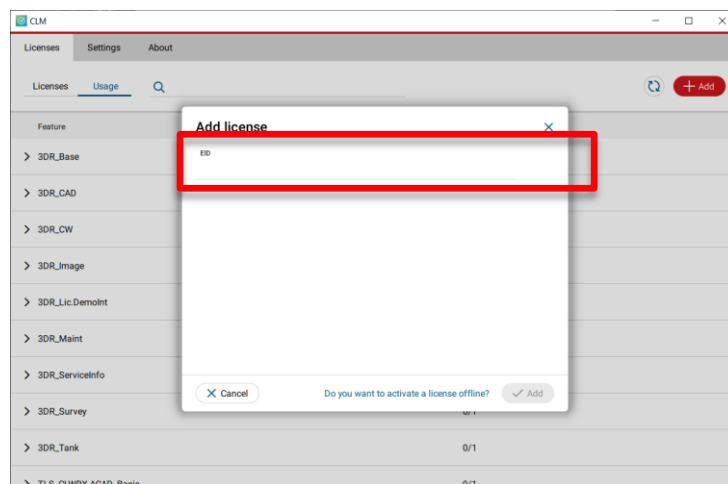


****NOTE* Be sure to choose the CLM Floating option (there are two CLM options and the Nodelocked CLM will not activate your license)***

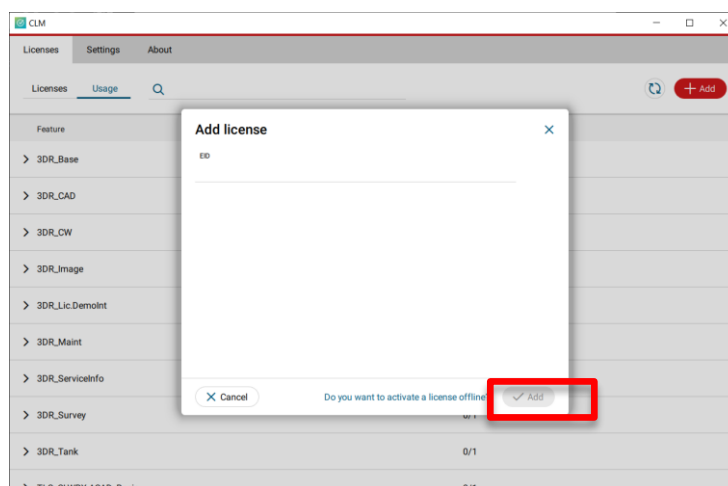
2. Choose the "Activate new licenses" option.



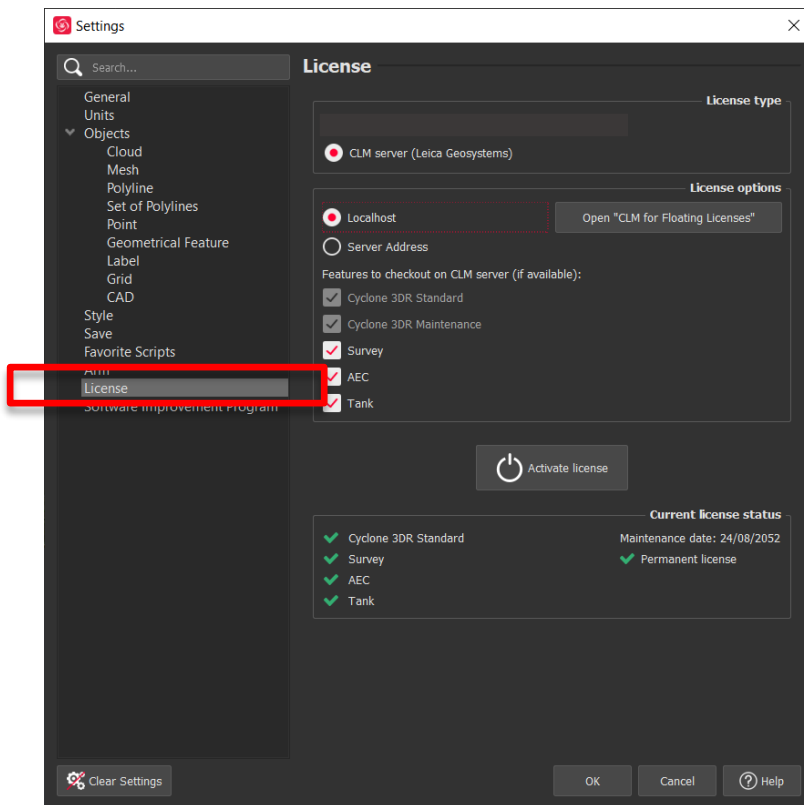
3. Enter your Entitlement ID (EID) in the field. To enter multiple EIDs separate them with a semicolon ";" and no space.



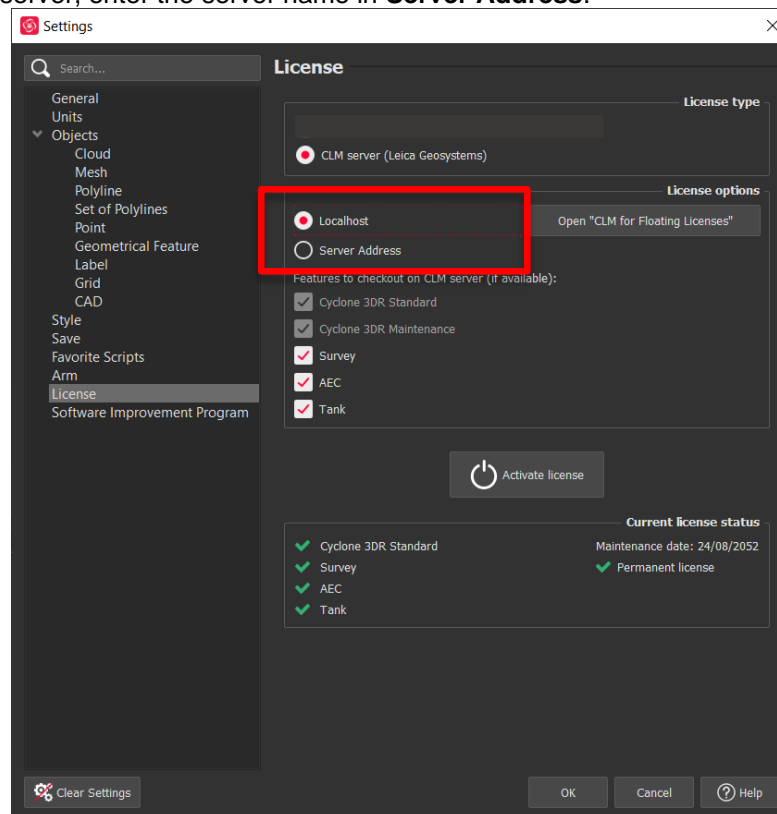
4. After you have entered your EID, choose the "Check for Activatable licenses" button in the bottom right of the page



5. Once your licenses are activated you can launch Cyclone 3DR.
6. Go to Settings and select License.

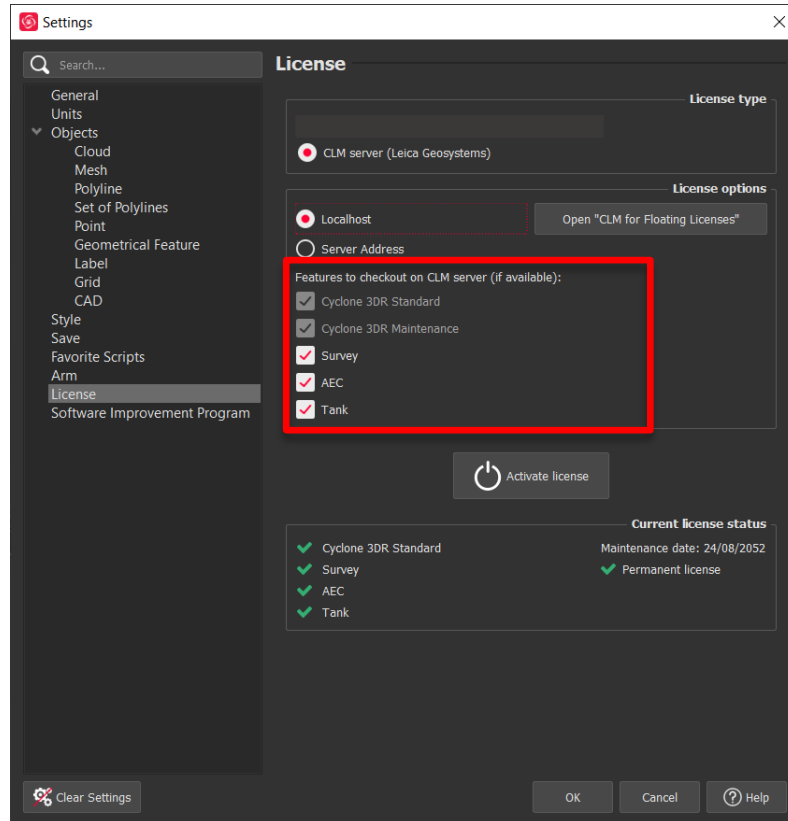


7. If you have entered the EID inside your local CLM, select **Localhost**. If the license is on a dedicated server, enter the server name in **Server Address**.

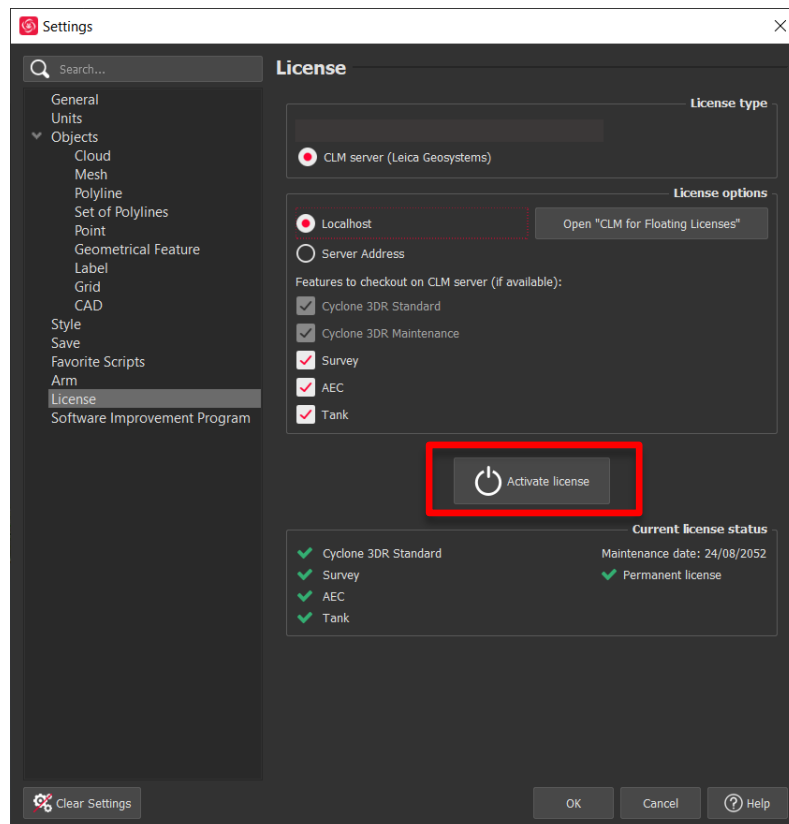


8. You can select the features you want to check out from CLM. The available options to checkout

will correspond to the options you purchased which are contained in your EID.



9. Once the options are selected, click on **Activate license**.



Licensing

All users with valid CCP or CCP which was valid as of 12 March 2021 for Cyclone 3DR, can run this new version of Cyclone 3DR.

All users with valid CCP or CCP which was valid as of 12 March 2021 for 3DReshaper, can run this new version of Cyclone 3DR with no new license required.

Users with 3DReshaper licenses with expired CCP must migrate to Cyclone 3DR in order to continue to access updates and support. Please contact your sales or support personnel for more information.

Known Issues

- The Documentation Center is only available in English.
- Some CAD import and export issues might happen. For example, when exporting a cloud in DXF, some entities might be missing. To avoid this, it is preferable to use the Send to AutoCAD option.
- If DXF can be imported with a standard version, DWG requires the AEC or PRO Edition. One workaround is to use the 3DSend command from AutoCAD to Cyclone 3DR.
- .RSH files are natively compatible with Cyclone 3DR, and the last version of 3DReshaper is compatible with .3DR files (with a limit on textures and CAD objects).

Leica Cyclone 3DR supported file formats

Please reference the Cyclone 3DR Technical Specification for a complete list of supported file types per license.

	Import	Export
Point Cloud	Files ASCII (*.asc, *.csv, *.xyz, *.yxz...) Leica Geosystems (*.pts, *.ptx) and LGS (*.lgs) Leica Nova MS50/60 (*.sdb, *.xml) ShapeGrabber (*.3pi) 3DReshaper binary file (*.nsd) AutoDesk DXF (*.dxf) STL (*.stl) Polyworks (*.psl) Leica T-Scan + Steinbichler (*.ac) LIDAR data (*.las; laz) Other ASCII (*.*) Zoller and Fröhlich (*.zfs - *.zfc) PLY points without triangles (*.ply) ESRI ASCII (raster format *.asc) FARO (*.fls - *.fws)	ASCII FILES (*.asc, *.csv...) Binary files (*.nsd) Leica Geosystems (*.pts, *.ptx) E57 (*.e57) IGES (*.igs) LAS (*.las) LAZ (*.laz) Autodesk DXF (*.dxf)

	POLYWORKS (*.psl) E57 (*.E57 files) LandXML files (*.xml) DOT Products (*.dpl) RDBX	
Mesh	STL format (*.stl) Binary PBI format (*.pbi) DXF 3Dface format (*.dxf) Ascii POLY format (*.poly) OBJ format (*.obj) Ascii Leica format (*.msh) VRML files (*.wrl / *.vrm / *.iv) OFF files (*.off) PLY (*.ply)	Ascii and binary STL format (*.stl) Binary PBI format (*.pbi) DXF 3Dface format (*.dxf) Ascii POLY format (*.poly) Vertices only (*.asc) DXF polyline (*.dxf) IV Format (*.IV)Ascii Leica format (*.msh) VRML 2 (*.wrl / *.vml / *.iv) PLY (*.ply) LandXML (*.xml) OBJ format (*.obj)
Contour / Section	IGES format DXF polyline format Binary MLI format (*.mli)	IGES format DXF polyline format Binary MLI format (*.mli) ASCII formats
CAD Model	IGES STEP DWG IFC RVT	IGES STEP DXF
Project	Cyclone 3DR (*.3dr) DXF - DWG XML Cyclone ModelSpace View (from IMP) JetStream Enterprise project	Cyclone 3DR (*.3dr) DXF PDF 3D SKETCHFAB
Image	BMP JPEG JPG PNG	Ortho-image including georeferencing information as TXT file JPG JPEG BMP PNG TIF GIF

Cyclone 3DR provides “SendTo” features as well to import and export certain kind of data with third-party products. More information is available in Cyclone 3DR documentation center (from the software help menu).

	Send From	Send To
Point Cloud	-	-
Mesh / Surfaces	AUTODESK AutoCAD HEXAGON MineSight 3D	AUTODESK AutoCAD HEXAGON MineSight 3D
Contour / Section / Points	AUTODESK AutoCAD HEXAGON MineSight 3D	AUTODESK AutoCAD HEXAGON MineSight 3D
CAD Model	AUTODESK AutoCAD	-
Image	-	AUTODESK AutoCAD (ortho-image)